



**OBJECTIVE:** Improve the labor supply in key industry sectors, growing the human capital necessary to attract and retain companies in the Kansas City region.

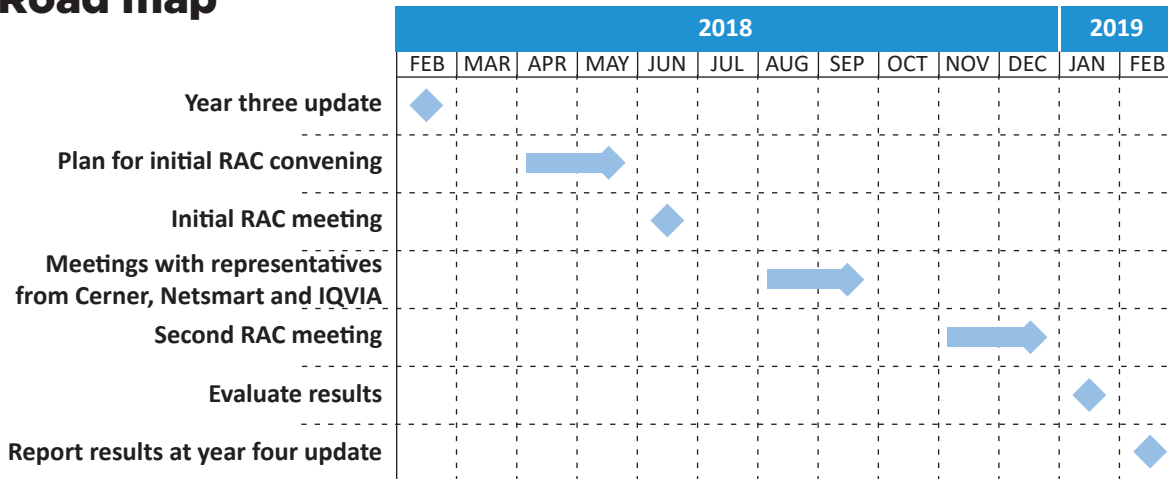
**OWNER:** BioNexus - KC

**QUARTERLY UPDATE | SEPTEMBER 2018**

**Life Sciences TIE**

ACCOMPLISHMENTS	NEXT STEPS	SUSTAINABILITY
<p>Regional Advisory Council (RAC) convened in June. The focus is bioinformatics.</p> <p>Identified foundational competencies from International Society of Computational Biology.</p> <p>KU-Edwards and University of Central Missouri launched bioinformatics programs.</p>	<p>Engage with a select group of employers to define skills for entry level data analysts and highly skilled data scientists in the life science sector.</p> <p>Continued planning meetings with core leadership team.</p> <p>Schedule a second RAC meeting.</p>	<p>The workforce action plan was integrated into BioNexus-KC's workforce development strategies.</p>

**Road map**



**Metrics**

- Participation of industry leaders in the Regional Advisory Council.
- Engagement of educational stakeholders in the Regional Advisory Council.
- Assess new programs/certifications for alignment with 2017 labor analysis gaps.
- Bioinformatics employer satisfaction survey.
- Monitor new program participation and completion rates.
- Bioinformatics certificates/degrees awarded from new and existing programs.
- STEM attainment disaggregated by gender and race/ethnicity.